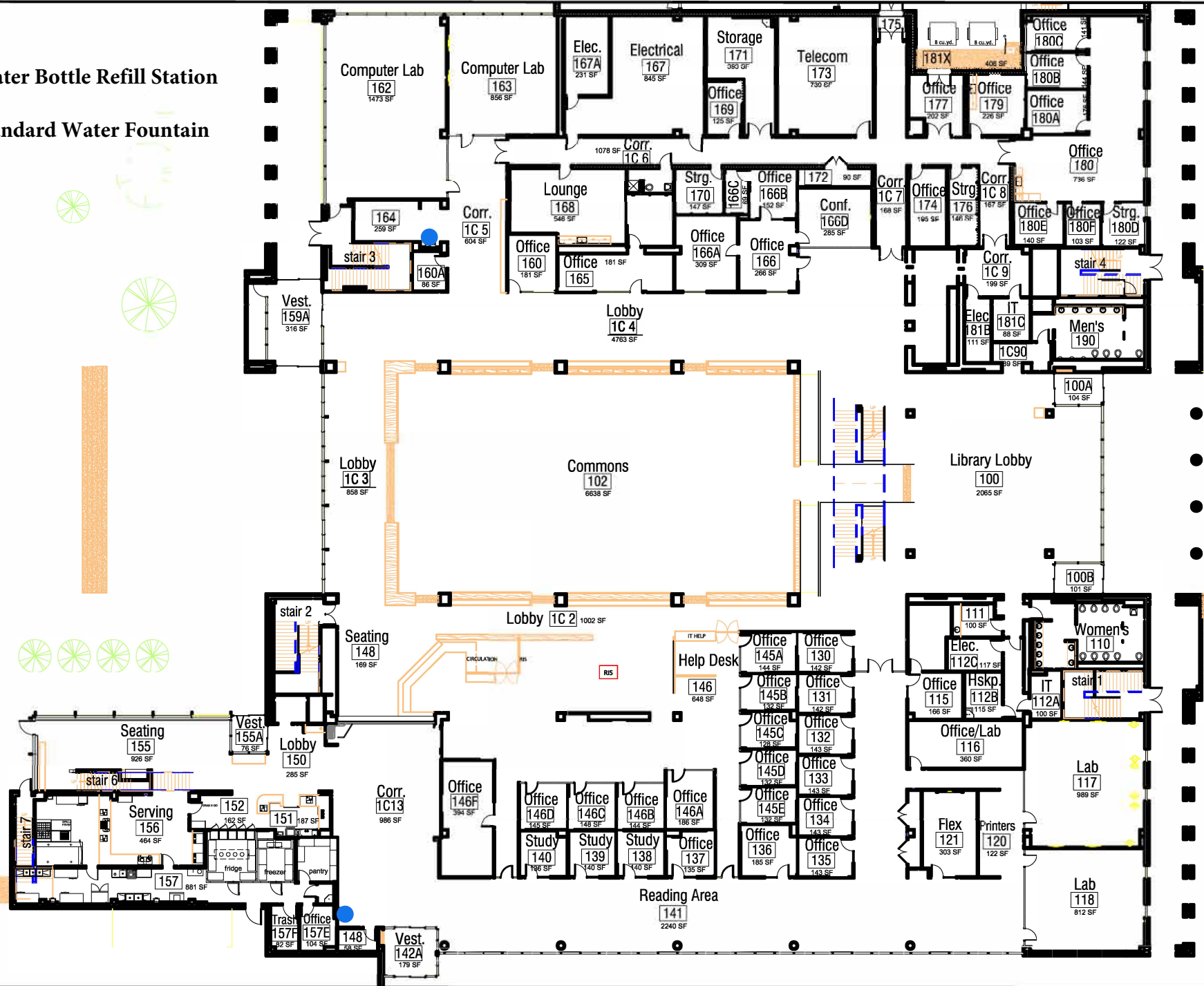


- Water Bottle Refill Station
- Standard Water Fountain

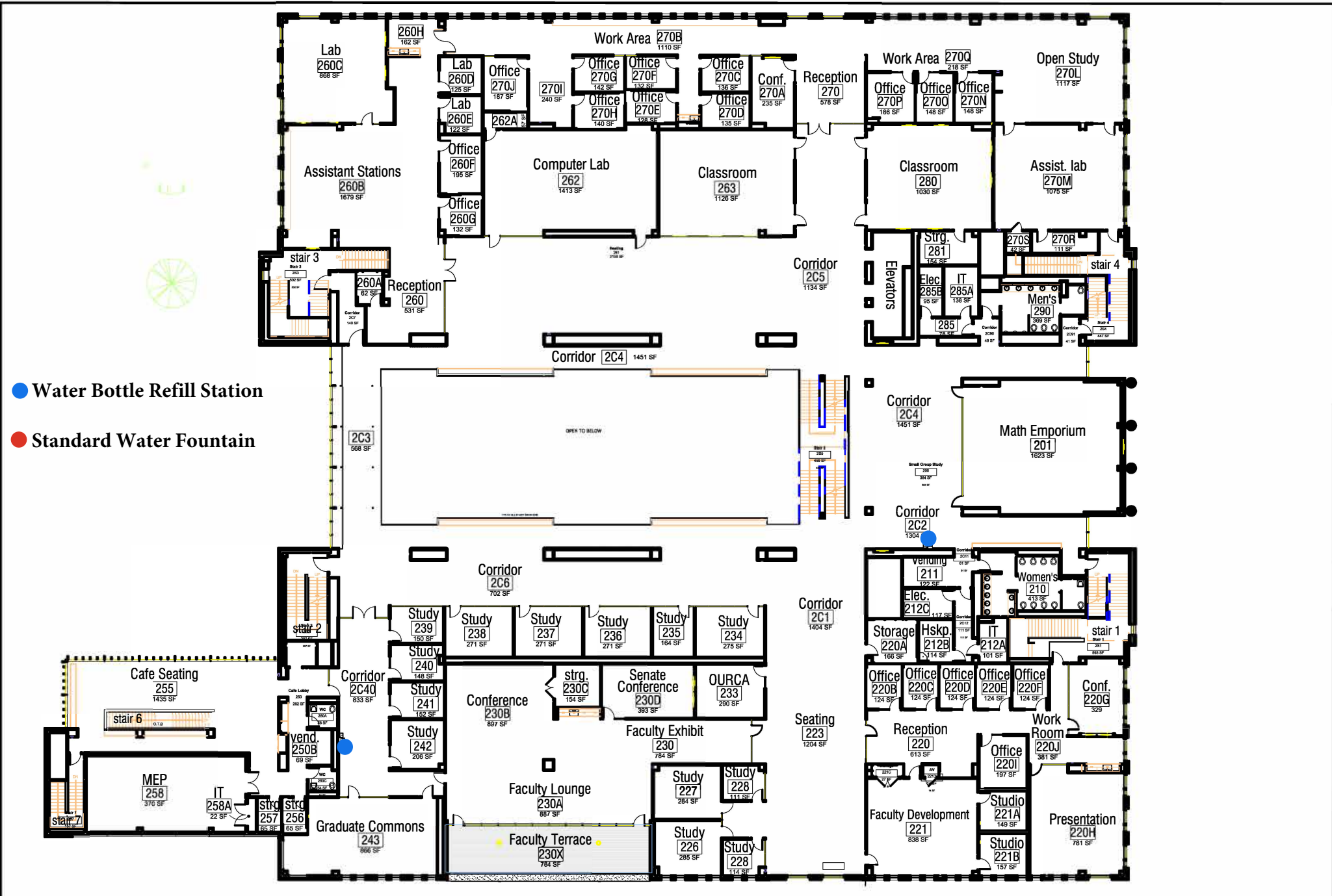


DWG. NO.:	REVISION DATE:
A-1	03-30-2016
BLDG. CODE:	SCALE:
AC	NTS
	DESIGN BY:
	PLA
	CHECKED BY:
	TDR

RECORD FLOOR PLAN
ACADEMIC COMMONS

FIRST FLOOR PLAN

SALISBURY UNIVERSITY
 FACILITIES PLANNING & CAPITAL PROJECTS
 ARCHITECTURAL AND ENGINEERING SERVICES
 1101 CAMDEN AVENUE
 SALISBURY, MARYLAND 21801
 410 - 543 - 6215



- Water Bottle Refill Station
- Standard Water Fountain

DWG. NO.:	REVISION DATE:
A-2	03-30-2016
SCALE:	NTS
DESIGN BY:	PLA
BLDG. CODE:	CHECKED BY:
AC	TDR

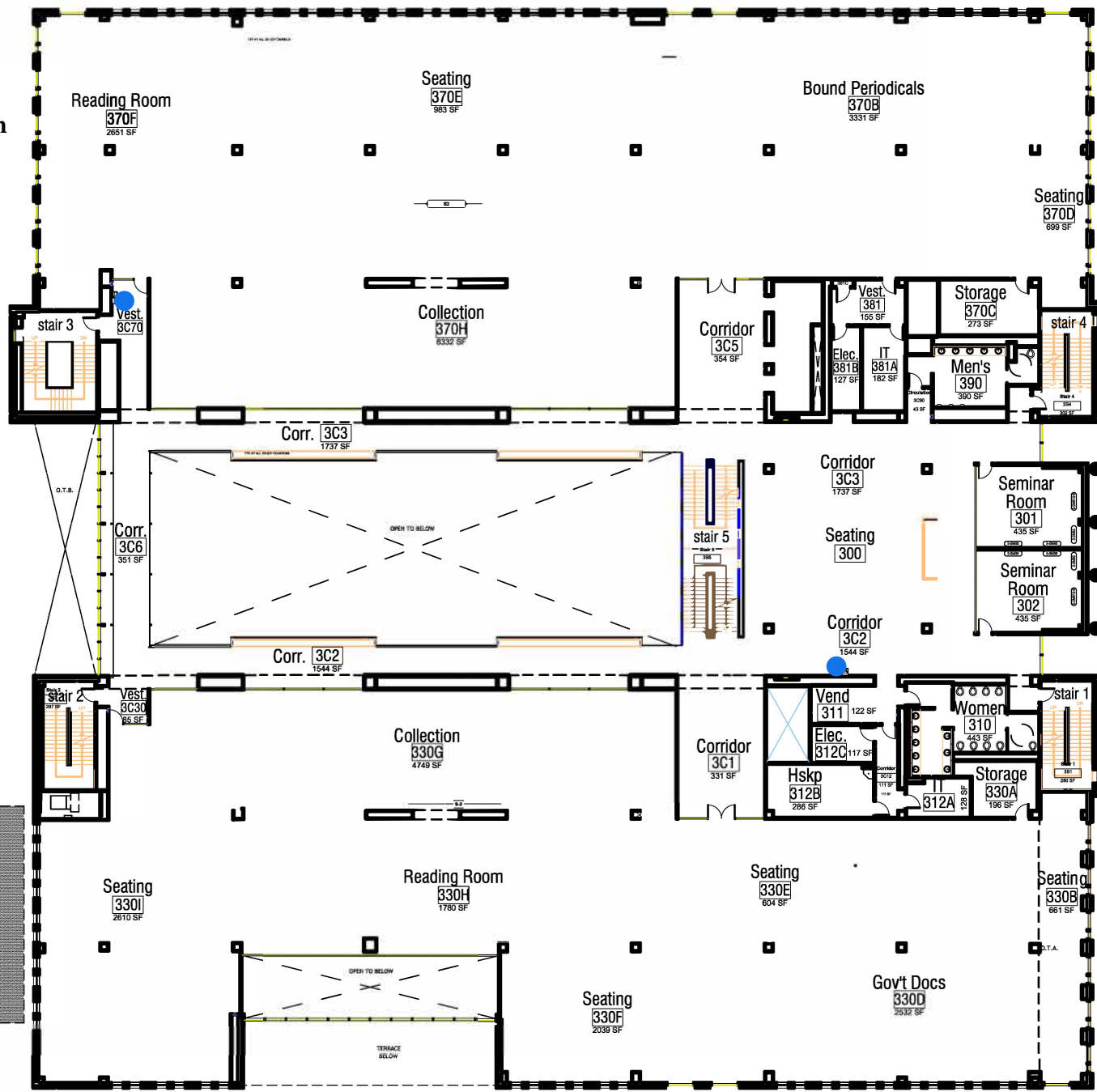
**RECORD FLOOR PLAN
ACADEMIC COMMONS**

SECOND FLOOR PLAN

SALISBURY UNIVERSITY
 FACILITIES PLANNING & CAPITAL PROJECTS
 ARCHITECTURAL AND ENGINEERING SERVICES
 1101 CAMDEN AVENUE
 SALISBURY, MARYLAND 21801
 410 - 543 - 6215

● Water Bottle Refill Station

● Standard Water Fountain

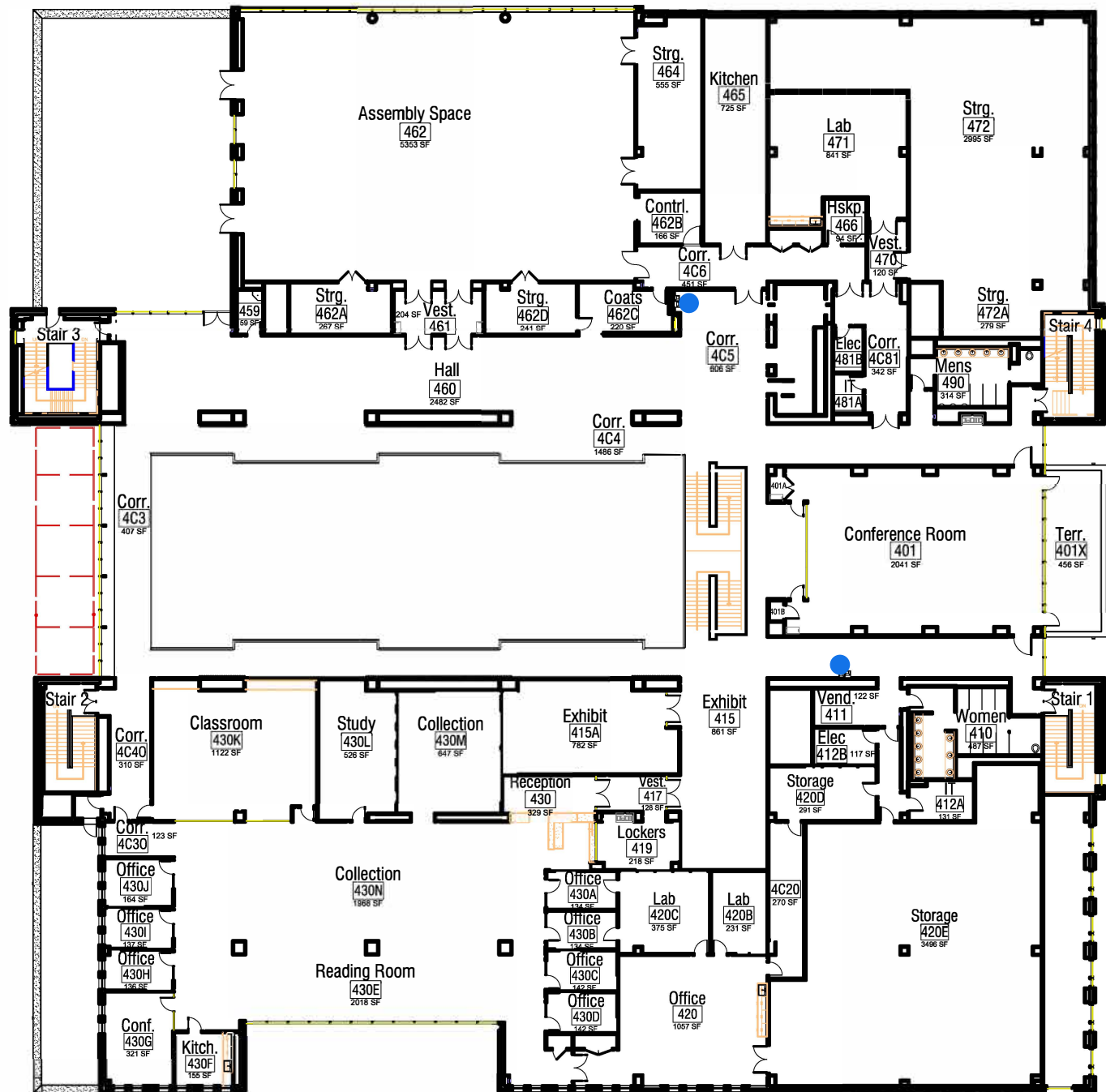


DWG. NO.:	REVISION DATE:
A-3	03-30-2016
BLDG. CODE:	SCALE:
AC	NTS
	DESIGN BY:
	PLA
	CHECKED BY:
	TDR

RECORD FLOOR PLAN
ACADEMIC COMMONS

THIRD FLOOR PLAN

SALISBURY UNIVERSITY
FACILITIES PLANNING & CAPITAL PROJECTS
ARCHITECTURAL AND ENGINEERING SERVICES
1101 CAMDEN AVENUE
SALISBURY, MARYLAND 21801
410 - 543 - 6215



- Water Bottle Refill Station
- Standard Water Fountain

DWG. NO.:	REVISION DATE:
A-4	07-05-2016
BLDG. CODE:	SCALE:
AC	NTS
	DESIGN BY:
	PLA
	CHECKED BY:
	TDR

RECORD FLOOR PLAN
ACADEMIC COMMONS

FOURTH FLOOR PLAN

SALISBURY UNIVERSITY
 FACILITIES PLANNING & CAPITAL PROJECTS
 ARCHITECTURAL AND ENGINEERING SERVICES
 1101 CAMDEN AVENUE
 SALISBURY, MARYLAND 21801
 410 - 543 - 6215